

CUPERTINO HISTORICAL SOCIETY & MUSEUM

THE CORNERSTONE

Spring 2005

Vol. 15, Issue 3

MESSAGE FROM THE PRESIDENT

Joint Meeting Reaps Mutual Rewards

By Donna Austin



The Cupertino Historical Society and the California History Center Foundation at De Anza College held a joint board meeting to discuss the commonalities we share and possible joint ventures in the future. Both boards want to preserve, educate



Tom Izu and Leslie Masunaga of CHC flank Donna Austin

and provide opportunities for community work and civic engagement projects. It was an exciting meeting as both boards shared ideas and goals. Both boards had lots to hear, learn and share about each other. I think it was one of the most productive meetings I have attended in a long time. Here is what our executive directors and a board member had to say:

Tom Izu, executive director, California History Center

"I do think the meeting was worthwhile. I am following up with possible community based service learning projects we can link to CHC, CHS and our college faculty and students. I do believe that this area is the most promising in that it can ultimately benefit everyone. I also think we can do some simple, yet interesting joint lectures or membership programs. I look forward to working more

closely with CHS. I believe CHS can provide our program with a connection it needs to Cupertino, and a collaboration between our two organizations will especially benefit the students we serve. The center is especially excited about creating some wonderful community-based learning projects for our college's faculty and staff. It is definitely time to renew our ties with CHS and to come up with some creative activities and ideas."

Anne Lehmer, recently hired executive director, Cupertino Historical Society

"I left the joint meeting between the CHC and CHS with great excitement for future collaborations. Both organizations brought excellent ideas to the table, along with a strong sense of purpose and desire for mutual support. As a unified group with multiple goals and pooled resources, the ability to make a strong case for funding support is greatly increased by such a partnership. The commonly shared educational focus and community-based orientation, in conjunction with timely project ideas like the incorporation of "green" buildings, all make the collaborative entity more robust. In addition, current project ideas hold the potential to simultaneously serve a wider variety of community members while furthering the separate missions of each partner organization. The most exciting thing to witness was the enthusiasm and dedication of each individual present. With such energy behind this endeavor, the

Continued on page 2

Inside

CHS's new director.....	2
Membership News.....	3
Volunteers in action.....	4
Hammond House.....	5

CHS Board Hires New Executive Director

Anne Lehmer is a fourth generation Californian, born in San Francisco. During annual family summer trips, she adopted the family passion for Native American history, and became close with Native American families in Oklahoma and Montana.

ABOUT ANNE LEHMER

Frequent museum visits were another part of family life. When Anne turned eight, the family moved to northwestern Montana, where her father became director of the local arts center. There, Anne had her first museum job, sweeping the gallery floors. Over the next several years, the Lehmer family homesteaded on 40 acres of wooded property. With the help of many friends, they built a pole-construction home using trees from their property for some of the timber and they even had an old-fashioned barn-raising to put up the walls. It took a while to get running water and electricity to the land, so early on Anne learned a healthy respect for pioneers who lived without modern conveniences, such as washing machines, automatic heaters and flush toilets. With wood as the only source of heat, Anne learned the importance of keeping the home fires burning to survive the long, snowy, cold winters. While growing up in Big Sky Country, Anne participated in her local 4-H club, earning several awards.

During high school Anne participated in choir and community theater. After graduation she enrolled at Mills College where she studied French and Anthropology. In ensuing years, Anne enjoyed using her 4-H sewing skills working for local companies, including one well known for its corsetry and historical costuming.

Participating in many events held by the Bay Area Costumers Guild, Anne and her co-workers learned about lifestyles of the past. Ever interested in sharing her passion for the past, Anne pursues family history with her maternal grandmother, keeper of the family heirlooms and stories.

Most recently, Anne attended San Francisco State University where she earned a Masters degree in Museum Studies with the goal of giving back to the museum community she grew to love. It is with great pleasure that she finds herself in a position to work for a beloved local organization with a historical focus, the Cupertino Historical Society and Museum.



Donna Austin and Anne Lehmer

MESSAGE FROM THE PRESIDENT

Continued from page 1

work involved will be joyful and the fruits of that labor bountiful."



Steve Ting

Steve Ting, board member, Cupertino Historical Society

"Common interests between the two organizations lead to enormous opportunities to collaborate and complement each other. Many joint projects in areas such as research/study, knowledge sharing, fundraising, and publications are a few good examples. High level of commitment and enthusiasm demonstrated by members from both organizations will ensure the success of the partnership."

Cupertino Loses a Community Friend

Willis Mary Watson Hartman, daughter of Dr. Tolbert and Ella Watson of Sunnyvale, passed away in July 2004 of a sudden illness.

A longtime resident and active member of the Cupertino community, Willis will be sorely missed by all of those who knew her. As the daughter of a respected country doctor, she grew up knowing the importance of community involvement. A graduate of Fremont High, Willis and her husband Donald J. Hartman, raised four children in the Cupertino area.

Willis Hartman is survived by her husband Don and her four children, 8 grandchildren, and 4 great-grandchildren.

MEMBERSHIP NEWS

As of March 10, 2005

Welcome new members

Lynn Ching
Mike Foulkes
Gerald Johnson
Mahesh & Kamal Nihalani
Kate Stober
Grace & James Stout

Thank You for Supporting Our Annual Fund

Anonymous
Joseph & Doris Adamo
Scot & Donna Austin
Gordon Beckstrom
Dorothy Billard
John & Judy Bruzus
Wendell & In Soon Carman
Charles & Kathleen Calhan
Nolan Chen
Brian Chew
Helene & Jim Davis
Mike Foulkes
Gatley Family
Warren & Yvonne Holt
Richard Jeffers
Jeffery Johnson
Florence Lindsey
Alice MacAllister & Michael O'Quin
Mike & Joanne Mansch
Kathy Nellis
Charles Newman
Hewlett Packard
Keith Peterson
Linda Quintero
Laverne Rabinowitz
Alice Schlim
Martin & Lauralee Sorensen
Alan Stocklmeir
Steve & Jeannie Ting
H.W. & L.M. Toensfeldt
Jim & Linda Walker
Jim & Linda Walker Family
Foundation
Seven Springs Foundation

Thank you, renewing members

Ellie & Ray Bortner
John & Judy Bruzus
Audry Butcher
Charles & Kathleen Calhan
Charles Carle
Paul & Judith Carmichael
Nolan Chen
Hazel Fretwell
Robert & Marsha Guevara
Kathleen Hendriksen
Gail Hugger
Laura Jacobson
Alan & Betty Johnson
Mike & Joanne Mansch
Charles Newman
Barbara Nunes
Clare & Jim Shoenfelder
George & Lorraine Sousa

*Membership gifts to the Cupertino
Historical Society and Museum
provide a base of support for
programs, services and general
operating. We appreciate the support
and generosity of new members and
continuing members.*

What's In a Name?

Thanks to all of you who sent in
suggestions for our new name.
Please vote! Write a 1, 2 or 3 next
to your first, second and third
choices, or write in another idea.

Cupertino Heritage Center _____

Cupertino History Center _____

History Cupertino _____

Keep current name: Cupertino
Historical Society _____

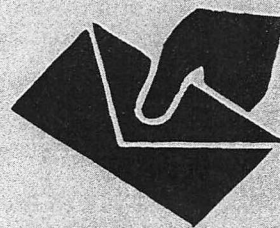
Other _____

(write another choice)

Support the Cupertino Historical Society

Join now! Become a member!

\$35	Individual membership
\$50	Family membership
\$125	Patron
\$250	Sponsor
\$500	Directors Circle
\$1000	Collector's Circle
\$2500	President's Circle
\$5000	Benefactor's Circle



Name _____

Spouse's name _____

Address _____

City, State, Zip _____

Phone _____

E-Mail _____

*Send this with your check to Cupertino Historical Society, 10185 North
Stelling Rd., Cupertino, Ca 95014*



Volunteer docent Frances Bush gives a demonstration inside the Museum gallery

To All Our Wonderful Volunteers

THANK YOU!!

Loretta Bassman
 Patricia Berber
 Sarmishtha Bhattacharya
 Frances Bush
 Philip Bush
 Charles Calhan
 Sonja Cook
 Irene Coon
 Julie Davis
 Roz Davis
 Joan Furusko
 Dorothy Gardner
 Gail Hugger
 Jim Limberatos
 Florence Lindsey
 Tiffany Ngo
 Andrew Nguyen
 Emily Pan
 Catherine Tan

Volunteers Make a World of Difference: Join Us

Have you ever wondered how the docents in a museum get to know everything about their exhibits? Have you ever thought it would be fun to share your passion for historical objects and their stories? Are you curious about what life was like in Cupertino years ago? Do you need to gain some experience with public speaking? Do you like telling stories or working with kids?

Perhaps you should consider joining our amazing team of volunteer docents. We are always interested in growing our volunteer corps, and we are currently seeking additional people to work in our Traveling Trunk program. You too can join the fun!

Learn about Cupertino history, travel to schools and special events and show off some of the fascinating treasures in our trunks.

We have a wonderful group of dedicated volunteers, made up of talented and fun people. If you are interested in learning more about these opportunities, please contact us at 408/ 973-1495 or cuphistorysoc@juno.com.

Come be a part of making history come alive today!



Volunteer docent Jim Limberatos keeps watch at the front desk

Hammond House Legacy Lives On

By Tim Summers, Caretaker

The Snyder/Hammond house and its history revolves around a historical hay farm, vineyard, and cattle ranch. In 1999, when the last of the cattle were taken off what was then called the King Ranch, it was one of the last operating cattle and hay operations on the floor of the Santa Clara Valley, and the very last in Monta Vista and Cupertino.

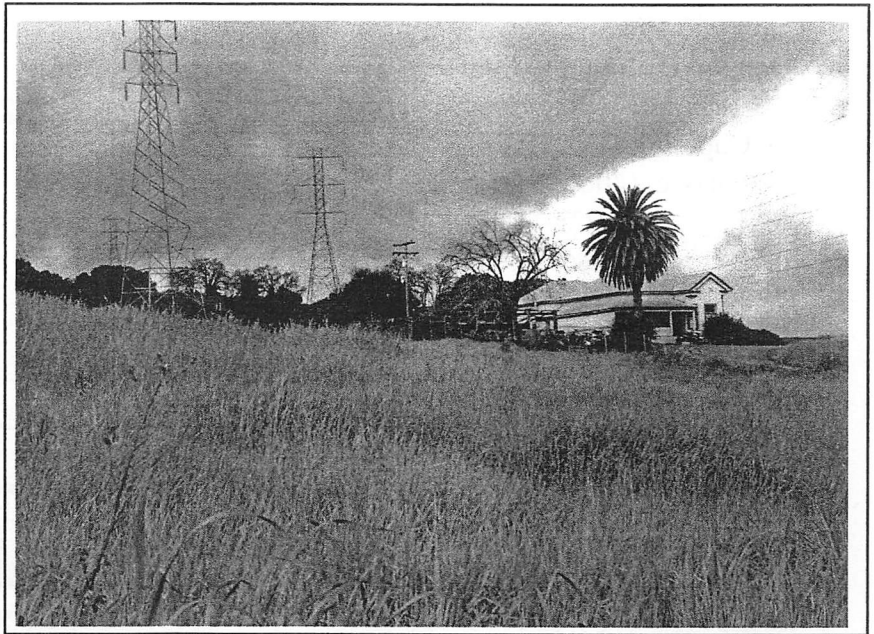
The value of the house lies more in its location and possible benefits to the community as an interpretive "historical" farming exhibit and "stage stop" along a historical trail than as a particular architectural resource. The home itself represents a specific period in California architecture and grew as the occupants' families grew. The occupants were mostly simple farmers, which gives us a context by which to view its future: the home and its surroundings belong more to the common folks of the valley, than as a showpiece of some person of note. The home's real lessons are: practicality, resourcefulness, hard work and survival.

The "historical" occupants of the house, Dr. and Mrs. Martha Hammond (Snyder), operated a hay farm, and that legacy continued through other farming families, (Sondgroth, King), relatively undisturbed throughout the 20th century up until 1999, when the lands were partitioned for parklands and development.

Throughout this time, the house was consistently occupied and the lands were farmed. That is one of the reasons that the home and its surrounding lands were available for preservation over 170 years after the farm was first established. It is herein that the importance of continuing the "Hammond" legacy is found. It cannot be ignored that the home, and the possible preservation of the last remaining pieces of farmland represent an important part of an ongoing resource for the Cupertino Historical Society and the community.

Since 1999, the Hammond House and the contiguous one-acre plot of land it is on have become increasingly isolated by the railroad on one side that limits egress and ingress to residents only. On the other side is the Gate Of Heaven Cemetery, surrounded by cyclone fences. The Stevens Creek Trail eventually will make a turn near the Hammond House and head to the parking areas. It may eventually open up this land so that the public can benefit from this historical resource.

Some things may change with the development of the surrounding lands, but the CHS has a great opportunity to provide the public with a real taste of the agricultural roots of the Santa Clara Valley, and our job has only been made easier through the continuous legacy passed from family to family here at the Ranch.



BULLETIN BOARD

Upcoming Events

Gathering at the Crossroads

Potluck 6:30 p.m., Lecture 7:30 p.m.

Cupertino Room, Quinlan Community Center

May 24: Fashions from 1850 to 1950

Aug 23: General Meeting

Oct 25: Oil in Cupertino? Hear what a geologist has to say about it!

Board Meetings, open to all members

March 16 5:30 p.m.

April 20 5:30 p.m.

May 18 5:30 p.m.

June 15 5:30 p.m.

Volunteer Meetings at the Museum

March 26 9 a.m.

May 28 9 a.m.

Save the date! Annual BBQ is June 25 at the Cooper-Garrod Winery & Stables!

Cupertino Historical Museum
Quinlan Community Center
10185 N. Stelling Road
Cupertino, CA 95014
Telephone: (408) 973-1495
Fax: (408) 973-1495
E-mail: cuphistorysoc@juno.com

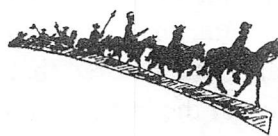
NON-PROFIT
ORGANIZATION
U.S. POSTAGE
PAID
CUPERTINO, CA
PERMIT NO. 266

MISSION STATEMENT

The mission of the Cupertino Historical Society and Museum is to create a passion for lifelong learning, preserve a vanishing past and serve as a bridge to a shared future. We believe that reflecting a broad representation of experiences, perspectives and cultures encourages stewardship and interaction, honoring the past and enhancing the lives of current and future citizens.

CUPERTINO HISTORICAL MUSEUM

Located in the Quinlan Community Center, the museum is open from 10 a.m. to 4 p.m. Wednesday through Saturday. Admission is free and open to the public.



BOARD OF DIRECTORS

Donna Austin	<i>President</i>
Mark McKenna	<i>President-Elect</i>
Linda Walker	<i>Vice-President</i>
Darryl Stow	<i>Treasurer</i>
Helene Davis	<i>Secretary</i>
Brian Chew	Kaye Steinback
Lynn Ching	Steve Ting
D. Michael Foulkes	Jim Walker
Mike Mansch	Kim Worrall
Anne Lehmer	Executive Director

The Cornerstone is published quarterly by the Cupertino Historical Society, a private, non-profit organization.